

This syllabus courtesy of the

Vernacular Architecture Forum Syllabus Exchange



A collaborative project of the Vernacular Architecture Forum
www.vafweb.org/resources/syllabi.html

instructor: Carla Yanni
course title: Nineteenth Century Architecture in the United States
institution: Rutgers University

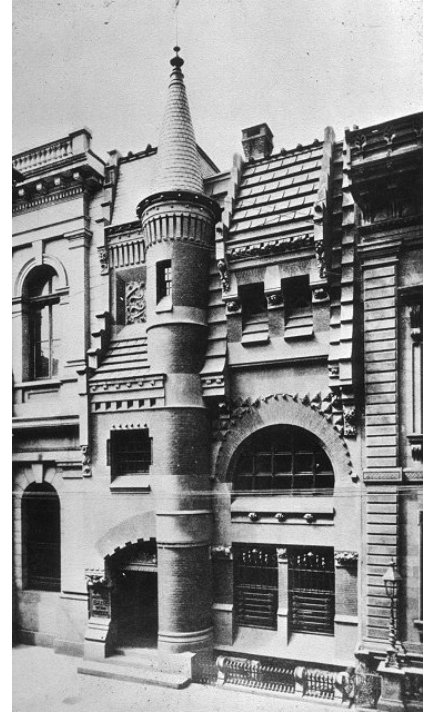
posted date: June 2008
stable URL: www.vafweb.org/resources/syllabi/yanni1.pdf

This document is provided for non-commercial, informational purposes only.

NINETEENTH-CENTURY ARCHITECTURE in the UNITED STATES

Art History 391 American Studies 309
Carla Yanni, Associate Professor Office: Voorhees 207
Office Phone: 732-932-7041 x23
Office hours: Thurs 3-4, Fri 1-2 and by appointment
Email: cyanni@rci.rutgers.edu

This course offers an overview of the social and intellectual history of architecture in the United States from 1650 to 1900. The lectures will analyze the role of architecture in societal transformations (the development of nationhood, industrialization, and urbanization.) Emphasis will be placed on the invention of new building types, including universities, government buildings, prisons, hospitals, railroad stations, and World's Fairs. We will also study the novel building techniques and materials of the nineteenth century. The major textbooks are Roth, American Architecture, Upton, Architecture in the United States, and Eggener, American Architectural History all of which you may purchase at the book store. Purchase books before October 10, the date they will be returned.



The course lectures are arranged chronologically, except for those titled "Building Types Study." On these days, we will look at the development of a single building type over time.

Extensive study materials for this class may be found at the web site (maintained expertly by Donald Beetham, Curator, Visual Resources Collection) at <http://arthistory.rutgers.edu>. Click on "Class Materials," then click on "Nineteenth-Century Architecture." About three or four days after each lecture, the images I showed in class will be posted on the web. Do not print them out—they are for study purposes only.

This class counts as an elective for completing the historic preservation certificate.

September 2 OVERVIEW

Week 2

September 6 EIGHTEENTH-CENTURY ARCHITECTURE IN THE US, COLONIAL AND VERNACULAR

Roth, 24-61, 73-87; in Eggener, Treib, 51-73

September 9 VIRGINIA ARCHITECTURE AND THOMAS JEFFERSON

On E-Reserve, Thomas Jefferson, Notes on the State of Virginia 22-25 in America Builds

In Eggener, on colonial Virginia, 73-93

Roth, 130-137

Week 3

September 13 IMAGES OF THE CLASSICAL PAST

Roth, 121-130, 151-170

Upton, 19-24, 31-38, 71-75, 249-252

In Eggener, Maynard, 132-142

September 16 BUILDING TYPE STUDY: PRISONS AND INSANE ASYLUMS
Roth, 184-185
E-Reserve, Charles Dickens, "Philadelphia and its solitary prison," 1842

Week 4

September 20 BUILDING TYPE STUDY: CULTURAL LANDSCAPES OF PLANTATIONS
In Eggener, Vlach, 95-112
E-Reserve, Thomas Hubka, "Just Folks Designing" in Common Places

Fri September 23 SHAKER VILLAGES & INDUSTRIAL TOWN AT LOWELL
E-Reserve, Dolores Hayden, Seven American Utopias, 64-103
Roth, 139-147

Week 5

Tues September 27 A.J. DOWNING, LANDSCAPE THEORY, AND GOTHIC REVIVAL COTTAGES
Upton, 17-19, 71-72, 46-47; Roth, 177-185
E-Reserve, Downing, "Cottage Residences," in America Builds, 154-171

Fri September 30 INFLUENCE OF GOTHIC REVIVAL THEORY FROM FRANCE AND ENGLAND
E-Reserve, Ruskin, "Nature of Gothic," in America Builds, 119-122.

Paper Topic Due

The paper assignment is as follows

Choose one building, landscape, building complex, or project (designed between c. 1750 and 1900) in the USA. Explain how the form of the building is a physical manifestation of the values of the society that produced it. Students who wish to make a model may do so instead, and should inform the instructor on this day. Further instructions on the model to follow.

Week 6

Tues October 4 BUILDING TYPE STUDY: PARKS
Roth, 231-235, Upton, 72-122
E-Reserve, Schuyler, "The Naturalistic Landscape: Central Park" New Urban Landscape

Fri October 7 **WALKING TOUR OF RUTGERS: OLD QUEEN'S CAMPUS AND THE VOORHEES MALL**
BUILDING TYPE STUDY: MUSEUMS (Metropolitan Museum of Art, Academy of Fine Arts)

Week 7

Tues October 11 MUSEUMS CONTINUED, PLUS CENTENNIAL AND 1893 WORLD'S COLUMBIAN EXHIBITION
In Eggener, Rydell, 249-266

Fri October 14 BUILDING TYPE STUDY: FEMINIST AND SOCIALIST COLLECTIVE HOUSING
E-Reserve, Beecher and Stowe, "The American Woman's Home," in Roth, America Builds

OUTLINE WORKSHOP

All research for your paper should be complete and you should bring your outline to class. Further instructions to follow.

TENTATIVE FIELD TRIP DATE: SUNDAY OR SATURDAY OCTOBER 15 OR 16 Details to Follow.

Week 8

Tuesday October 18 CITIES: URBANISM IN THE UNITED STATES
Roth, 61-73, 196-199
In Eggener, Stilgoe, "National Design," 25-39
Friday October 21 MIDTERM EXAM

Week 9

Tues October 25 BUILDING TYPES STUDIES: 1) COMMERCIAL BUILDINGS AND 2) TENEMENTS
Roth, 192-198, 229-230

Fri October 28 FRANK FURNESS AND RICHARD MORRIS HUNT
Upton, 91-97; Roth, 221-226, 287-288

Week 10

Tues November 1 SUBURBAN AND COUNTRY HOUSES
Roth, 237-247

Hewitt, The Architect and the American Country House, excerpts

Fri November 4 CLASS CANCELED (FIELD TRIP held in lieu of class)

Week 11

Tues November 8 H.H. RICHARDSON

Roth, 252-260

O'Gorman, Three American Architects, xv-xx, 1-67 (R-book)

Fri Nov 11

RICHARDSON continued

PAPER OR MODEL DUE

Week 12

Tues Nov 15 BUILDING TYPE STUDY: SKYSCRAPERS

Roth, 267-282, In Eggener, Bluestone, 177-206

Fri November 18 LOUIS SULLIVAN

Upton, 212-218

E-reserve Siry, "The Chicago Auditorium: Opera or Anarchy," available on JSTOR

E-Reserve, Sullivan, "Oasis" and "The Tall Office Building Artistically Considered," 340-46 in Roth, America Builds

Week 13

Tu Nov 22 No class because this Tuesday is a Rutgers Wednesday

Th Nov 24 *Thanksgiving*

Fri Nov 25 No class because of Thanksgiving break

Week 14

Tues November 29 ICONS OF PROGRESS: BROOKLYN BRIDGE, THE STATUE OF LIBERTY and PENN STATION

Roth, 249-250, 294-299

E-Reserve, Trachtenberg, "Brooklyn Bridge"

Fri December 2 FRANK LLOYD WRIGHT

Roth, 301-313

Siry, "Unity Temple" Art Bulletin available on-line through Rutgers Library

E-Reserve, Wright, "Art and Craft of the Machine," from Roth, American Builds

Week 15

Tues December 6 FRANK LLOYD WRIGHT continued; CALIFORNIA ARTS & CRAFTS

Roth, 313-316, In Eggener, O'Gorman, 267-281

Fri December 9 REVIEW

The final will be held on Dec 22 from 12 to 3.

THE FINE PRINT

Course evaluation: Class participation/Attendance (10%) 1st Test (20%) outline (5%) PAPER or MODEL (30%) 2nd Test (30%)

Grading scale: A = 91 and up; B+ = 90 to 86; B = 85 to 81; C+ = 80 to 76; C = 75 to 71; D = 70 to 66; F = 65 and below

Attendance Policy: I take attendance at the start of class. If you are not there when I call your name, you will be marked absent. If you miss more than three classes, your final grade will be marked down one half grade for each additional missed class. If you are having trouble with the assignments for this class, see the instructor as soon as possible. Honor Policy: Plagiarism is a violation of judicial codes; it will be dealt with in accordance with university policy.

Please do not disrupt class by arriving late, leaving early, or allowing your cell phone to ring. There is no excuse other than a family emergency or an illness (with doctor's note) for missing exams or handing in papers late. Papers will be marked down one half grade per 24 hours late. Make a photocopy of your paper or keep a digital copy. Save your work often and print out a rough draft--computer, email, and server problems are not acceptable excuses for late work.